



## NETWORK TRAFFIC MONITORING

## DATASHEET

## High precision real-time network performance monitoring with 100% visibility

Business performance in today's digital businesses are dependent on network and application performance utilizing data center, SaaS and IaaS cloud environments. Traditional network visibility approaches often have a fragmented, incomplete view of performance. As a result, IT ends up spending a lot of time analysing data but arrives at different and often conflicting conclusions on the cause of performance problems. IT operations teams need an end-to-end correlated view of end-user experience, application transactions, and network performance to be able to quickly diagnose root causes before the business is impacted.

With **Veryx Cloudmon NTM**, enterprise businesses get 100% network visibility and analytics of all traffic across their mission critical infrastructure - whether on-premises or cloud, enabling better control and realization of the power of digital innovation, at a fraction of the cost of competing solutions.

Veryx Cloudmon NTM helps meet availability and performance goals while keeping tool and network costs under control.

Using real-time flow acquisition and multi-stage analytic processing, Veryx probes deliver powerful capabilities, such as congestion detection, application metrics and end-user usage monitoring for web and non-web applications.

### KEY BENEFITS

- Improve network performance
- Improve employee productivity
- Quickly and easily detect & remediate network performance problems - Reduce MTTR Minimize downtime for business-critical networks
- Perform pro-active capacity planning with network usage and performance trend reports
- Track historical trending of network congestion events and their correlation
- Low cost OPEX with minimal CAPEX

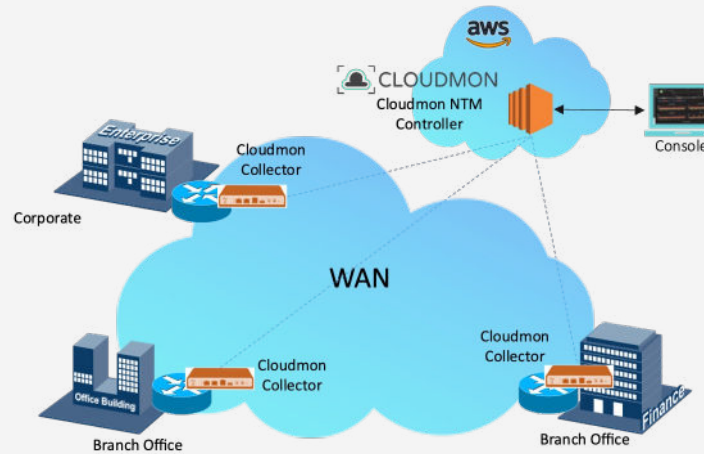
### KEY FEATURES

- Realtime monitoring of active flows and host Bandwidth utilization
- Proprietary flow probe for public cloud visibility
- Analytics of top Users, Application, Protocols, Subnets, Conversations, CBQoS, and Domains
- Measure Application RTT, TCP health by application, host, location & website
- Application visibility for more than 200+ popular applications

#### General

- Automation for Remediation
- Reports & Notifications - Email, Slack, etc.
- REST APIs for integration with third-party
- Cloud agnostic - private & public cloud

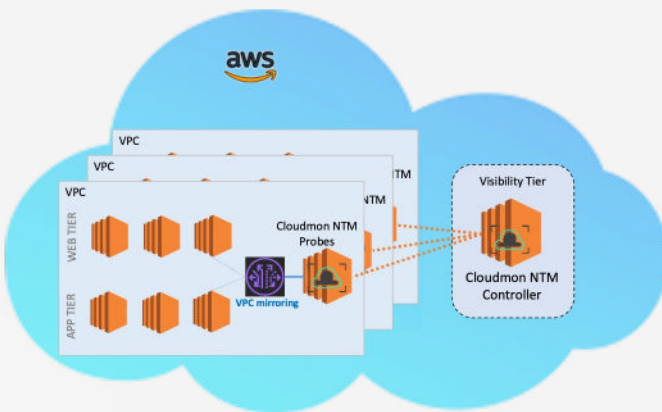




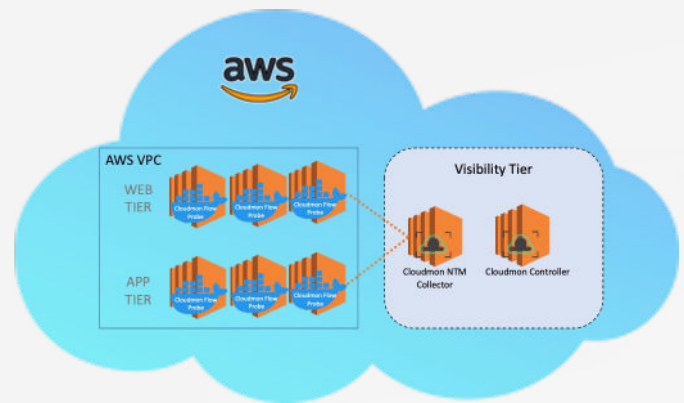
Scenario 1: Branch network visibility

Cloudmon NTM supports standard north-bound APIs to facilitate collaborative troubleshooting across network and application teams for faster problem diagnosis and resolution of complex performance issues.

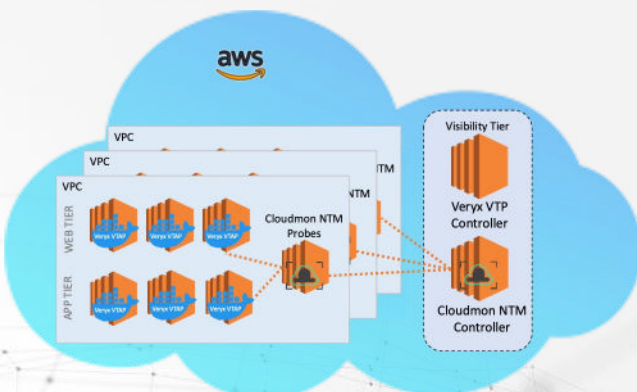
With a holistic view of network and application performance plus the ability to contextually drill into domain-specific details, enterprises can reduce the number of hand-offs between IT domain groups and improve resolution time for application and network outages.



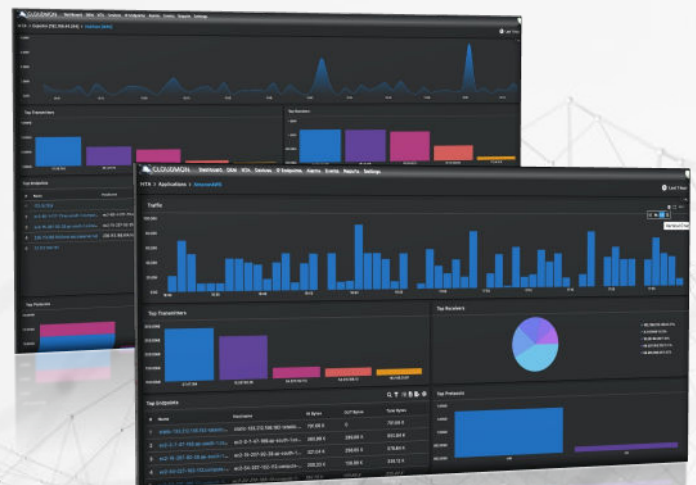
Scenario 2: Public Cloud visibility using AWS VPC mirroring



Scenario 3: Public Cloud visibility using Cloudmon Flow Probe



Scenario 4: Public Cloud visibility using Verity VTP



**Cloudmon NTM Collector** uses NetFlow v5, v9 / IPFIX / sFlow\* or **Cloudmon NTM probes** (physical or virtual) that DPI of all the traffic and push the relevant meta-data to the Cloudmon NTM controller. Deployment in private/public cloud environments require support of either cloud providers VPC mirroring or Veryx VTAP solution (licensed separately).

### Controller Hardware Requirements

Intel Xeon E5-2620v4 or equivalent  
RAM: 16GB, recommended 32GB  
SSD: 2TB  
OS: CentOS 7.9

### Controller Virtual Machine Requirements

Intel Xeon E5-2620v4 or equivalent  
vCPUs: 8  
RAM: 16GB, recommended 32GB  
SSD: 2TB  
OS: CentOS 7.9

### Cloudmon NTM Flow Probe Hardware Requirements

Docker support  
RAM: 1GB, recommended 2GB  
Disk: 128MB  
OS: Linux (all flavours)

### Cloudmon NTM Probe / Collector Hardware Requirements

Intel Xeon E5-2620v4 or equivalent  
RAM: 8GB, recommended 32GB  
SSD: 128GB  
OS: CentOS 7.9

Note: For Veryx VTAP system requirements contact [cloudmon-support@veryxtech.com](mailto:cloudmon-support@veryxtech.com)

\* In roadmap

## ORDERING INFORMATION

Part Number	Description
NTM_STD_25	Veryx Cloudmon NTM, Standard Edition (25 interfaces) - Includes 1 collector / probe, monitors up to 4 routers
NTM_STD_50	Veryx Cloudmon NTM, Standard Edition (50 interfaces) - Includes 2 collectors / probes, monitors up to 16 routers
NTM_STD_100	Veryx Cloudmon NTM, Standard Edition (100 interfaces) - Includes 3 collectors / probes, monitors up to 24 routers
NTM_STD_250	Veryx Cloudmon NTM, Standard Edition (250 interfaces) - Includes 5 collectors / probes, monitors up to 40 routers
NTM_STD_500	Veryx Cloudmon NTM, Standard Edition (500 interfaces) - Includes 10 collectors / probes, monitors up to 80 routers

## PARTNERSHIPS



**FOR MORE INFORMATION, TO SCHEDULE A DEMO OR GET A FREE TRIAL CONTACT:**

[sales@veryxtech.com](mailto:sales@veryxtech.com) or any of our authorized resellers.

---

## About Veryx Technologies

Veryx Technologies is a provider of innovative network visibility, monitoring and security solutions for enterprises, network service providers, cloud service providers, and network equipment vendors.

Veryx offers solutions for network security, network visibility, network testing, and equipment testing applications for technologies such as Cloud, SD-WAN, SDN/NFV and IOT.

Email : [info@veryxtech.com](mailto:info@veryxtech.com)

Web : [www.veryxtech.com](http://www.veryxtech.com)

USA : +1 267 440 0140

International : +44-203-371-8691

India : +91-44-6677 2200

Veryx®, Cloudmon® are trademarks of Veryx Technologies. All other trademarks of respective owners are acknowledged.

DS 3.1

Copyright © 2021-2023 Veryx Technologies. All rights reserved.

